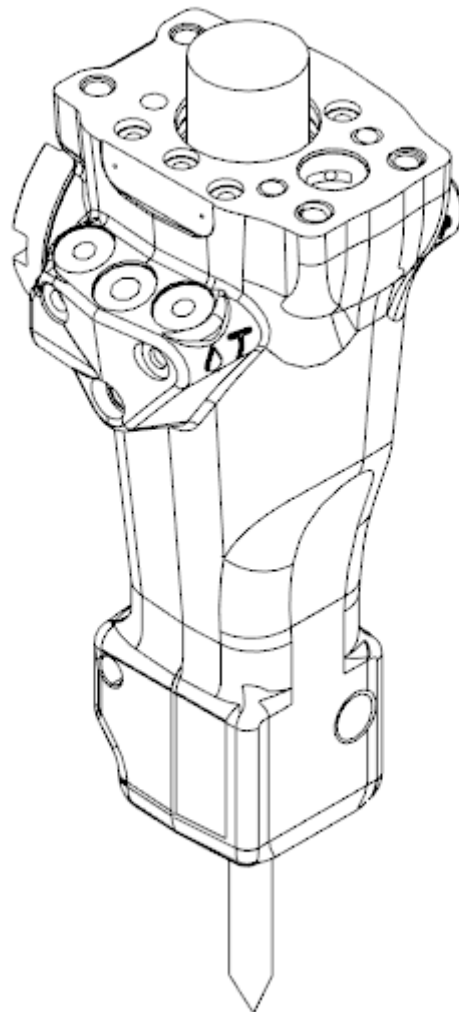


SB 52

Spare parts list Hydraulic breakers

SB 52 s/n BES043707 –



General information

This spare parts list applies to the following:

Part number	Description
8460030010	SB 52

Use only authorized parts. Any damage or malfunction caused by the use of unauthorized parts is not covered by Warranty or Product Liability. Any unauthorized use or copying of the contents or any part thereof is prohibited. This applies in particular to trademarks, model denominations, part numbers, and drawings.

Instructions for use

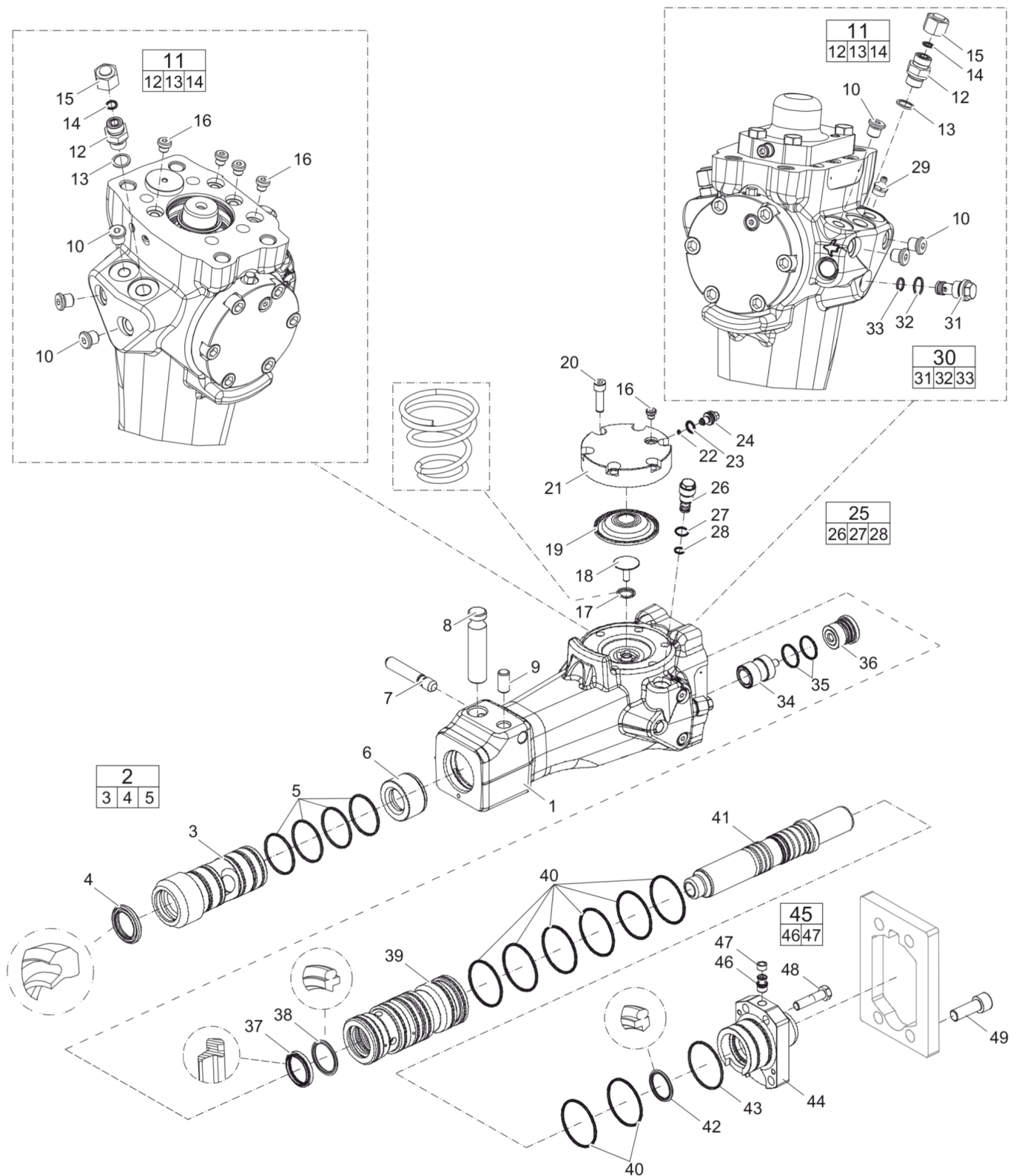
This spare parts list contains no safety regulations and is merely intended to assist in the ordering of spare parts.
For information about operating, servicing, or repairing, the relevant Safety and operating instructions must be consulted at all costs.
Please observe the safety instructions listed in the relevant Safety and operating instructions!

Kits and consumables	1
Spare parts list	
Spare parts list	3
Optional parts	
Bushing oversize, complete	6
Restrictor, complete	9
Tightening torque	
Tightening torque	11
Working tools	
Working tools SB 52	13
Accessories	
Optional equipment	15
Hydraulic hoses	17
Kits	
Label kit	19
Seal kit	21
Accumulator repair kit	23
Lower hammer part kit - SB 52	25
Dimensions	
Dimensions SB 52	27

Kits and consumables

Service offers resume SB52	Item	Description
Lubricants	1	Chisel paste cartridge (for manual greasing)
	2	Chisel paste cartridge for ContiLube® II Micro
Main wear part	3	Impact ring
	4	Lock buffer
	5	Lock pin
	6	Retainer pin
	7	Wear bush
Rebuild&Overhaul kits	8	Label kit
Start-Up Kits	9	Start-Up Kit Chisel (cross)
	10	Start-Up Kit Chisel (X-Profile)
	11	Start-Up Kit Moil point
	12	Start-Up Kit Moil point (X-Profile)
	13	Start-Up Kit Plus
Wear&Repair Kits	14	ACC umulator repair kit
	15	Lower breaker part kit
	16	Seal kit

Item	Part No.	Name	Qty	L
1	3363094913	Chisel paste cartridge for grease gun, 12 x 400 g (0.88 lbs)	1	
2	3363106447	Chisel paste cartridge, 150 g x 12, 0.33 lb x 12	1	
3	3315334500	Stop ring	1	
4	3315304600	Lock buffer	1	
5	3315333900	Lock pin	1	
6	3315346500	Tool retainer	1	
7	3315333780	Bushing, complete	1	
8	3315333591	Label kit	1	
9	3382070065	Start-Up Kit Chisel (cross)	1	
10	3382070066	Start-Up Kit Chisel (X-Profile)	1	
11	3382070063	Start-Up Kit Moil point	1	
12	3382070064	Start-Up Kit Moil point (X-Profile)	1	
13	3315419502	Start-Up Kit Plus	1	
14	3315334690	Accumulator repair kit	1	
15	3315352105	Lower hammer part kit	1	
16	3315333590	Seal kit	1	

Spare parts list Spare parts list

Refer to the Parts Online web page for most up-to-date information. The printed information might be outdated.

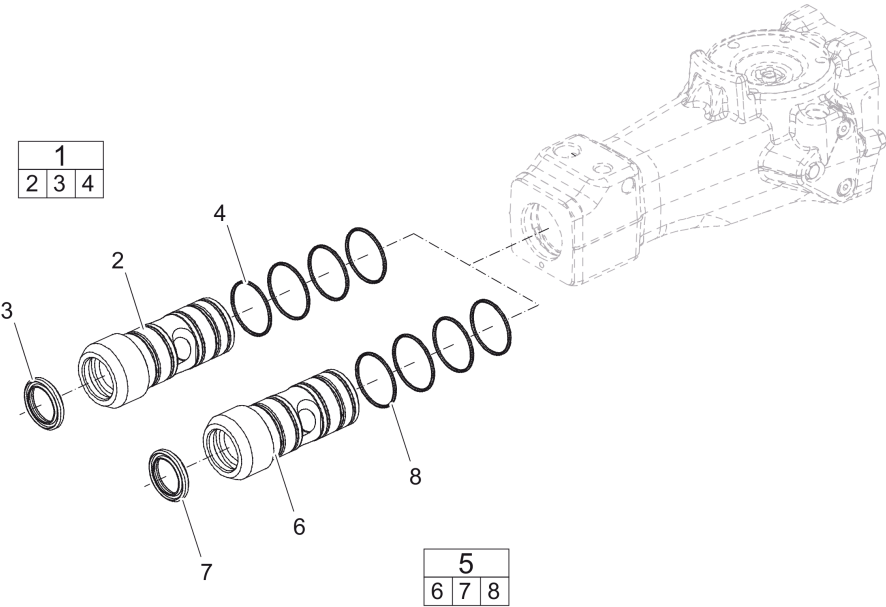
Item	Part No.	Name	Qty	L
1	-	Hammer body	1	
2	3315333780	Bushing, complete	1	A
3	-	Bushing, Ø 60 mm, Ø 2.36 in.	1	
4	3315334200	Scraper ring	1	
5	0663210800	O-ring, 54.5 x 3 mm, 2.15 x 0.12 in.	4	
6	3315334500	Stop ring	1	
7	3315333900	Lock pin	1	
8	3315346500	Tool retainer	1	
9	3315304600	Lock buffer	1	
10	0686644207	Hex. sock. plug	6	B
11	0570700002	Nipple, complete	2	C
12	-	Nipple	1	
13	0664000002	Seal ring	1	
14	0663905001	O-ring, 9.25 x 1.78 mm , 0.36 x 0.07 in. (90 shore)	1	
15	0570700009	Cap	2	
16	0686371805	Plug VSTI R 1/8-ED	5	D
17	3315346600	Coil spring	1	
18	3315339100	Diaphragm support	1	
19	3315346200	Diaphragm	1	
20	0211196548	Allen screw	6	
21	3315334600	Accumulator cover	1	
22	0661100048	Seal washer	1	
23	0663212000	O-ring 13.3 x 2.4 mm (70 shore), 0.52 x 0.09 in.	1	
24	3315346400	Charge valve	1	
25	3315335000	Pressure relief valve, complete	1	
26	-	Pressure relief valve	1	
27	0663903201	O-ring, 15.6 x 1.78 , 0.62 x 0.07 in. (90 shore)	1	
28	0663905401	O-ring, 10.82 x 1.78 mm , 0.43 x 0.07 in. (90 shore)	1	
29	0544215300	Grease nipple, ISO 7-R 1/4	1	E
30	3315369537	Restrictor, complete	1	F
31	-	Restrictor	1	
32	0663903201	O-ring, 15.6 x 1.78 , 0.62 x 0.07 in. (90 shore)	1	
33	0663905401	O-ring, 10.82 x 1.78 mm , 0.43 x 0.07 in. (90 shore)	1	
34	3315298700	Control valve	1	
35	0663211489	O-ring, 28.24 x 2.62 mm, 1.11 x 0.10 in.	2	
36	3315365000	Valve cover	1	
37	0665909963	Wiper	1	
38	0665070142	Piston rod seal	1	

Refer to the Parts Online web page for most up-to-date information. The printed information might be outdated.

Item	Part No.	Name	Qty	L
39	3315333800	Liner	1	
40	0663211364	O-ring 58 x 3 mm	8	
40	-	Part Description Not Available	1	
41	3315334000	Piston	1	
42	0665070141	Piston rod seal	1	
43	0663210653	O-ring, 76 x 2 mm, 2.99 x 0.08 in.	1	
44	3315333600	Back head	1	
45	3315244881	Check valve, complete	1	
46	-	Check valve	1	
47	3315280800	Valve rubber	1	
48	0147140503	Screw	4	
49	3315333592	Bolt kit	1	

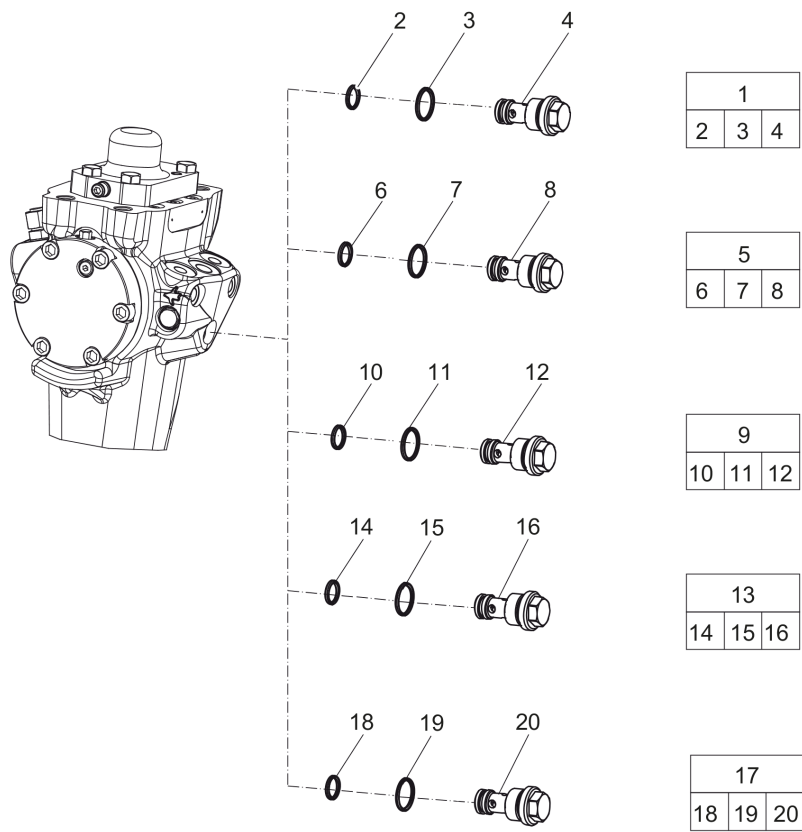
This page intentionally left blank

Optional parts Bushing oversize, complete

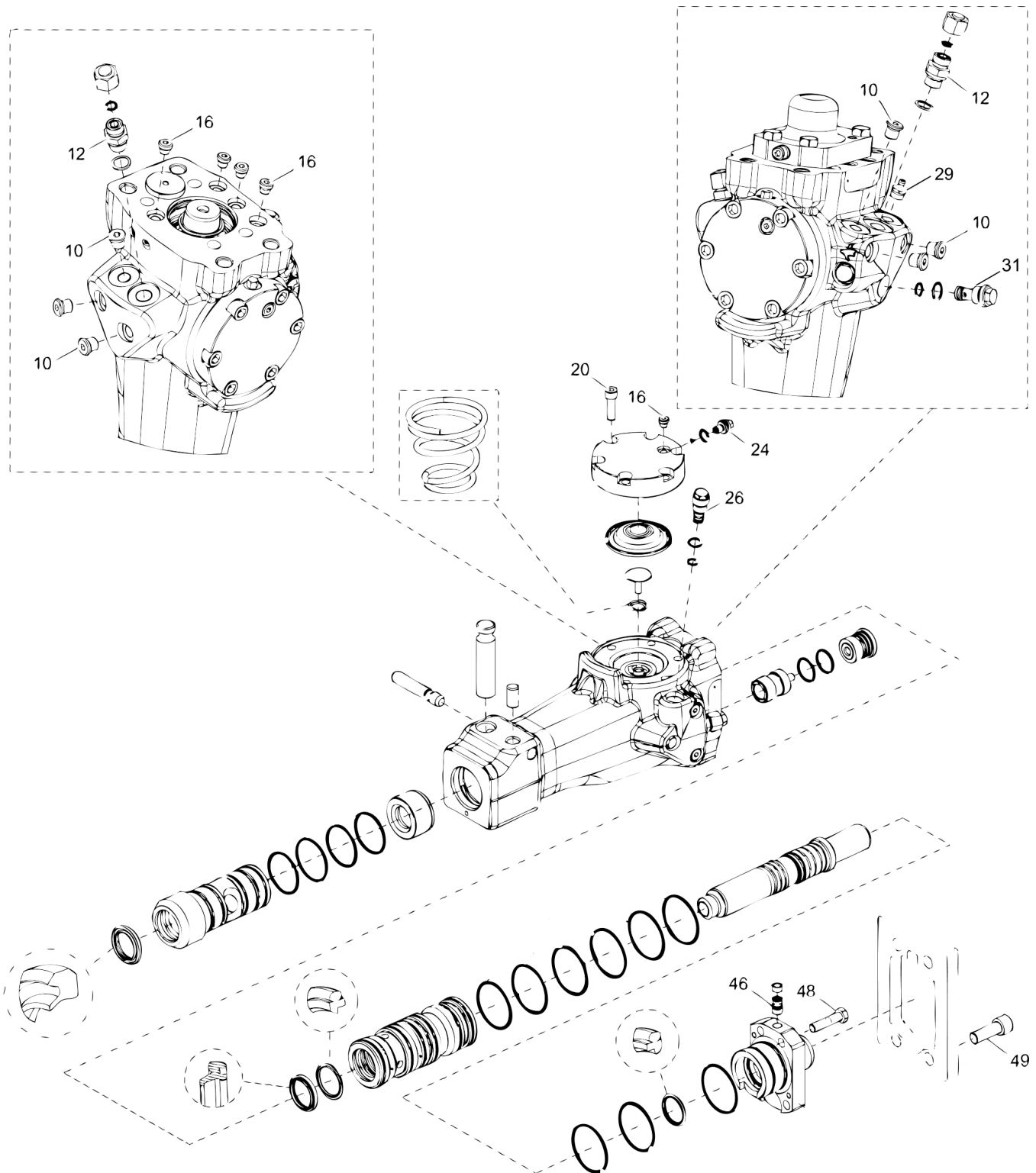


Item	Part No.	Name	Qty	L
1	3315333760	Bushing oversize, complete	1	
2	--	Bushing, Ø 61.5 mm, Ø 2.42 in.	1	
3	3315334200	Scraper ring	1	
4	0663210800	O-ring, 54.5 x 3 mm, 2.15 x 0.12 in.	4	
5	3315333763	Bushing oversize, complete	1	
6	--	Bushing, Ø 63.0 mm, Ø 2.48 in.	1	
7	3315334200	Scraper ring	1	
8	0663210800	O-ring, 54.5 x 3 mm, 2.15 x 0.12 in.	4	

Optional parts Restrictor, complete

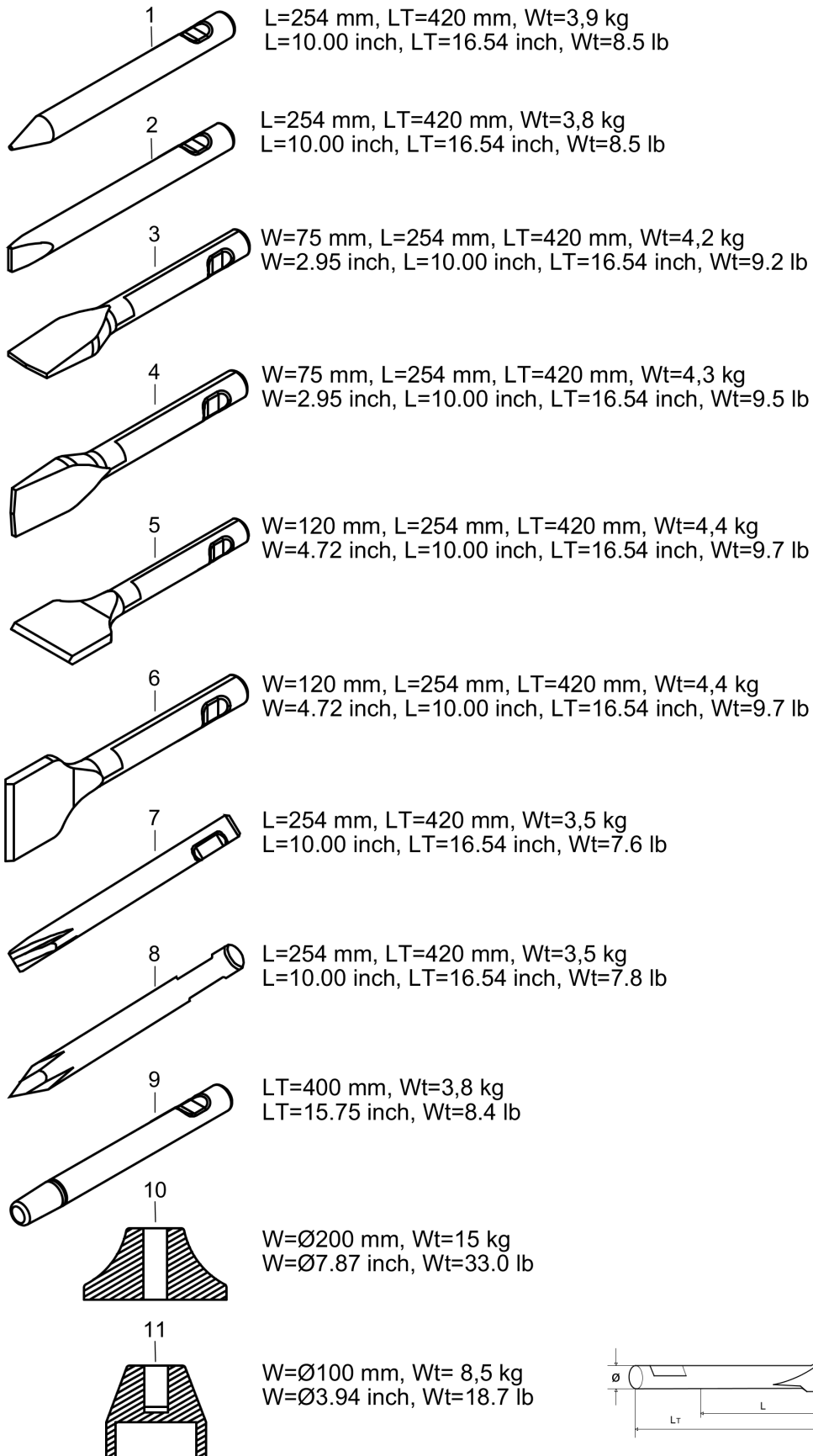


Item	Part No.	Name	Qty	L
1	3315369522	Restrictor, complete	1	
2	--	O-ring, 10.82 x 1.78 mm , 0.43 x 0.07 in. (90 shore)	1	
3	--	O-ring, 15.60 x 1.78 mm , 0.61 x 0.07 in. (90 shore)	1	
4	--	Restrictor	1	
5	3315369524	Restrictor, complete	1	
6	--	O-ring, 10.82 x 1.78 mm , 0.43 x 0.07 in. (90 shore)	1	
6	--	O-ring, 10.82 x 1.78 mm , 0.43 x 0.07 in. (90 shore)	1	
7	--	O-ring, 15.60 x 1.78 mm , 0.61 x 0.07 in. (90 shore)	1	
7	--	O-ring, 15.60 x 1.78 mm , 0.61 x 0.07 in. (90 shore)	1	
8	--	Restrictor	1	
8	--	Restrictor	1	
9	3315369536	Restrictor, complete	1	
10	--	O-ring, 10.82 x 1.78 mm , 0.43 x 0.07 in. (90 shore)	1	
10	--	O-ring, 10.82 x 1.78 mm , 0.43 x 0.07 in. (90 shore)	1	
11	--	O-ring, 15.60 x 1.78 mm , 0.61 x 0.07 in. (90 shore)	1	
11	--	O-ring, 15.60 x 1.78 mm , 0.61 x 0.07 in. (90 shore)	1	
12	--	Restrictor	1	
12	--	Restrictor	1	
13	3315369538	Restrictor, complete	1	
14	--	O-ring, 10.82 x 1.78 mm , 0.43 x 0.07 in. (90 shore)	1	
14	--	O-ring, 10.82 x 1.78 mm , 0.43 x 0.07 in. (90 shore)	1	
15	--	O-ring, 15.60 x 1.78 mm , 0.61 x 0.07 in. (90 shore)	1	
15	--	O-ring, 15.60 x 1.78 mm , 0.61 x 0.07 in. (90 shore)	1	
16	--	Restrictor	1	
16	--	Restrictor	1	
17	3315369527	Restrictor, complete, ø2.7 mm, ø0.11 in.	1	
18	--	O-ring, 10.82 x 1.78 mm , 0.43 x 0.07 in. (90 shore)	1	
18	--	O-ring, 10.82 x 1.78 mm , 0.43 x 0.07 in. (90 shore)	1	
19	--	O-ring, 15.60 x 1.78 mm , 0.61 x 0.07 in. (90 shore)	1	
19	--	O-ring, 15.60 x 1.78 mm , 0.61 x 0.07 in. (90 shore)	1	
20	--	Restrictor	1	
20	--	Restrictor	1	

Tightening torque Tightening torque

Refer to the Parts Online web page for most up-to-date information. The printed information might be outdated.

Item	Part No.	Name	Qty	L
10	-	Plug - 30 Nm	-	A
12	-	Nipple - 80 Nm	-	
16	-	Plug - 20 Nm	-	B
20	-	Hexagon socket screw - 75 Nm	-	C
24	-	Charge valve - 20 Nm	-	
26	-	Pressure relief valve - 80 Nm	-	
29	-	Grease nipple - 30 Nm	-	
31	-	Restrictor - 80 Nm	-	
46	-	Check valve - 30 Nm	-	D
48	-	Hexagon head screw - 75 Nm	-	E
49	-	Set of four hexagon socket screw - 290 Nm	-	F

Working tools Working tools SB 52

Item	Part No.	Name	Qty	L
1	3083340918	Moil point	1	
2	3083340919	Chisel (cross)	1	
3	3083340920	Wide chisel (cross)	1	
4	3083340921	Wide chisel (parallel)	1	
5	3083340922	Asphalt cutter (cross)	1	
6	3083340923	Asphalt cutter (parallel)	1	
7	3363098247	Chisel (X-Profile)	1	
8	3363098246	Moil point (X-Profile)	1	
9	3315369900	Shaft	1	
10	3315370600	Tamping pad (square)	1	
11	3315371400	Post driver pad (round)	1	

Accessories Optional equipment

NO EXPLODED VIEW
AVAILABLE
FOR THIS BOM

Item	Part No.	Name	Qty	L
-	0909107100	Grease gun for 400 g cartridge	1	A
-	3363094913	Chisel paste cartridge for grease gun, 12 x 400 g (0.88 lbs)	1	
-	3315383190	ContiLube II micro	1	
-	3315386780	Welding kit, universal	1	B
-	3315386280	Hose kit, universal	1	C
-	3363106447	Chisel paste cartridge, 150 g x 12, 0.33 lb x 12	1	
-	3363094669	Filling device	1	D
-	3315383980	Filling adapter	1	E
-	3363066411	Filling device	1	F
-	3362263900	Chisel paste container (15 kg)	1	G
-	3362263275	Chisel paste container (45 kg)	1	H
-	3360920415	Filling device for accumulator	1	
-	3363094459	Nipple, for charging the accumulator	1	
-	3361329803	Filling hose for charging the accumulator	1	
-	3315353100	Bushing wear controller	1	

Comments for Page: Optional equipment

(L)OCAL REMARKS

A | for manual greasing with cartridge 400 g (0.88 lb)

B | for ContiLube™ II micro

C | for ContiLube™ II micro

D | for Chisel paste cartridges 150 g (0.33 lb) to use in combination with Chisel paste container 15 kg (33 lb)

E | for Chisel paste cartridges 150 g (0.33 lb)

suitable to Filling device for 15 kg (33 lb) and 45 kg (99 lb)

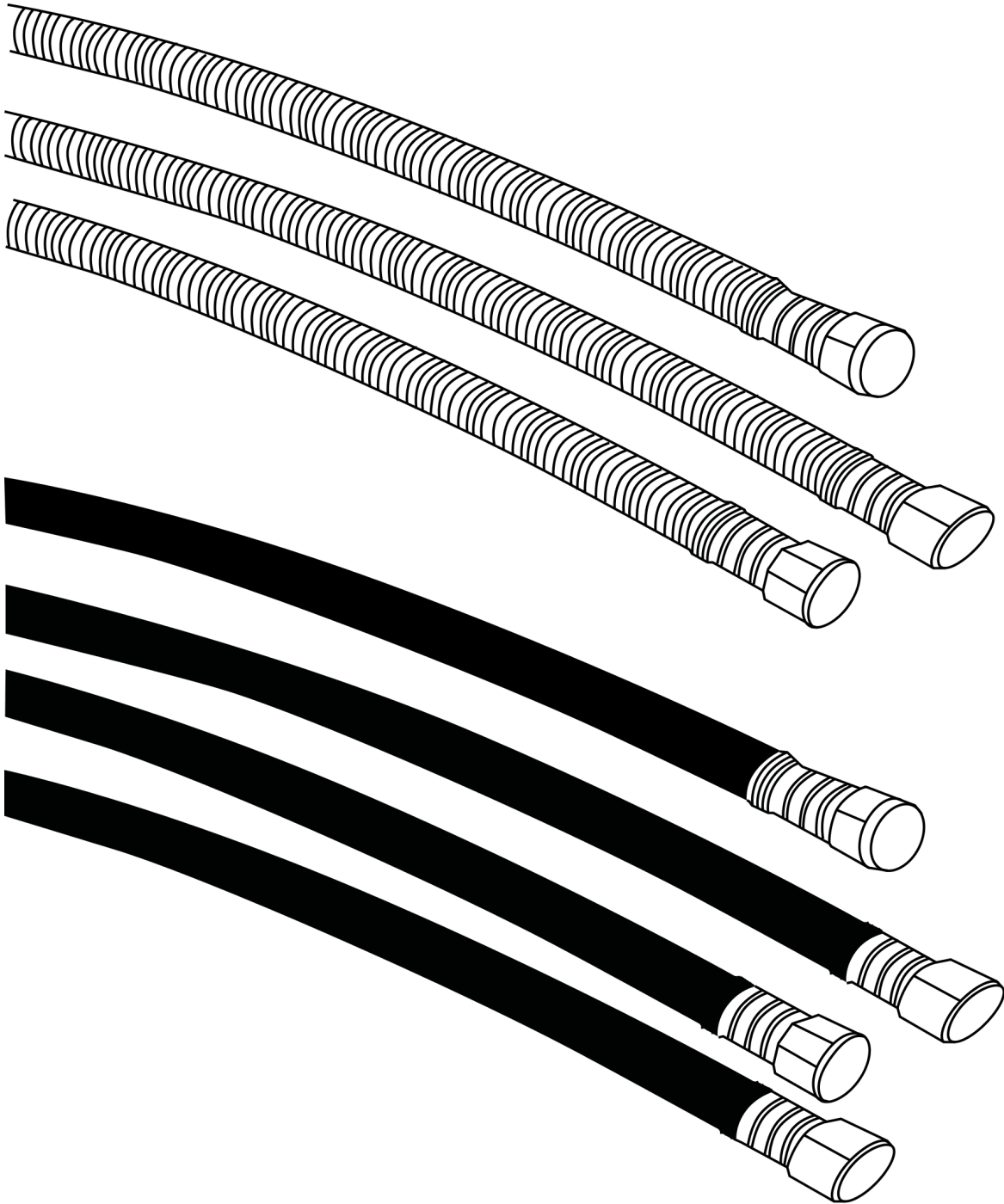
F | for Chisel paste cartridges 150 g (0.33 lb) to use in combination with Chisel paste container 45 kg (99 lb)

G | 15 kg

33 lb

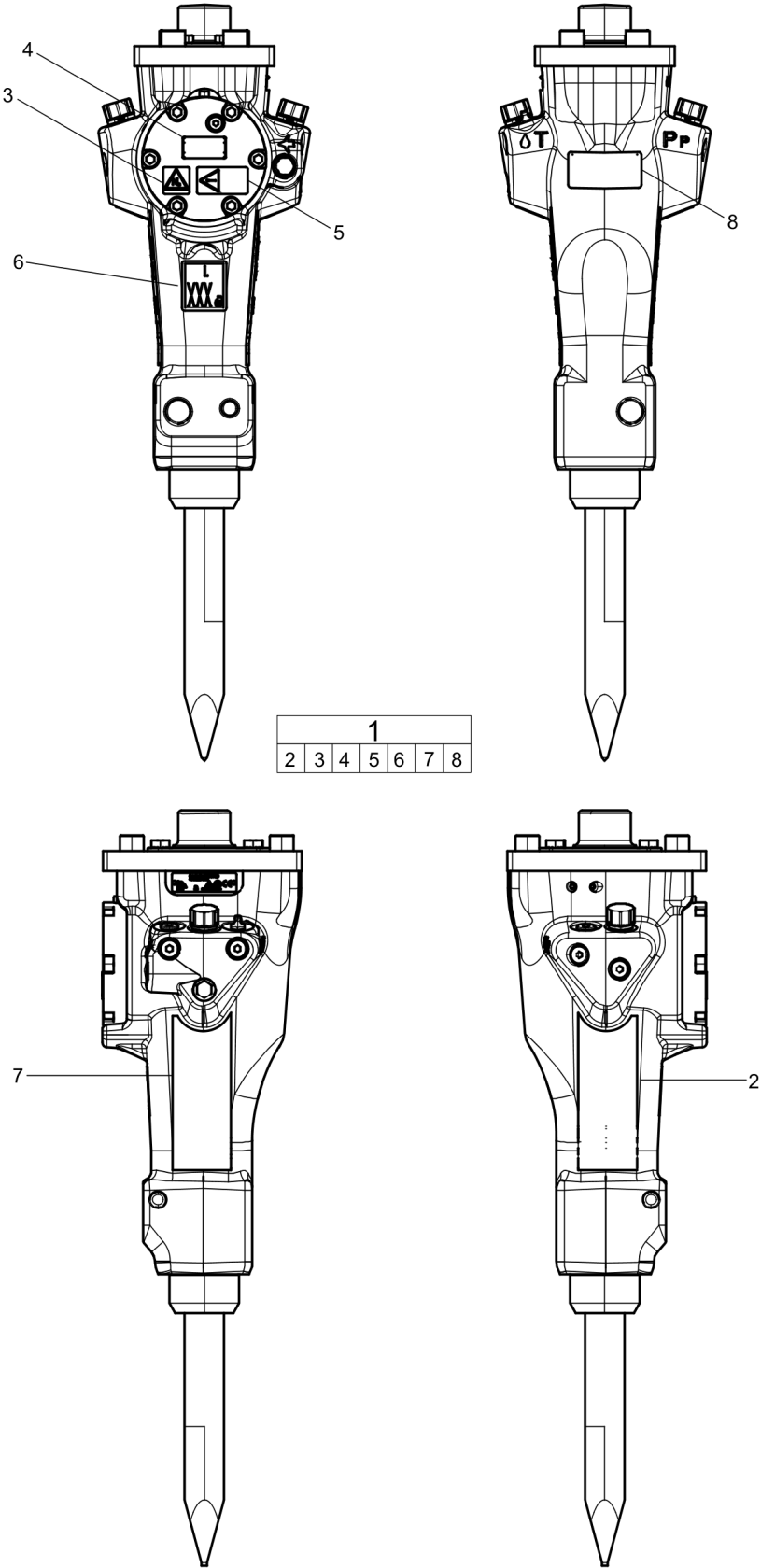
H | 45 kg

99 lb

Accessories Hydraulic hoses

Item	Part No.	Name	Qty	L
1	-	Heavy Duty Connection Hoses with Steel Spring Protection	1	
2	3363116917	Hydraulic hose, I.D. 12 (0.47"), both ends M 22 x 1.5, conical seal 24°, length 1000 mm (39.4 in.)	1	
3	3363115422	Hydraulic hose, I.D. 12 (0.47"), both ends M 22 x 1.5, conical seal 24°, length 1500 mm (59.05 in.)	1	
4	3361353551	Hydraulic hose, I.D. 12 (0.47"), both ends M22 x 1.5, conical seal 24°, length 1750 mm (69 in.)	1	
5	3363115421	Hydraulic hose, I.D. 12 (0.47"), both ends M 22 x 1.5, conical seal 24°, length 2100 mm (82.68 in.)	1	
6	-	Standard Connection Hoses	1	
7	3363115420	Hydraulic hose, I.D. 12 (0.47"), both ends M 22 x 1.5, conical seal 24°, length 1500 mm (59.05 in.)	1	
8	3363491001	Hydraulic hose, I.D. 12 (0.47"), both ends M22 x 1.5, conical seal 24°, length 1750 mm (69 in.)	1	
9	3363101421	Hydraulic hose, I.D. 12 (0.47"), both ends M 22 x 1.5, conical seal 24°, length 2100 mm (82.68 in.)	1	
10	3363098017	Additional fitting set	1	

Kits Label kit



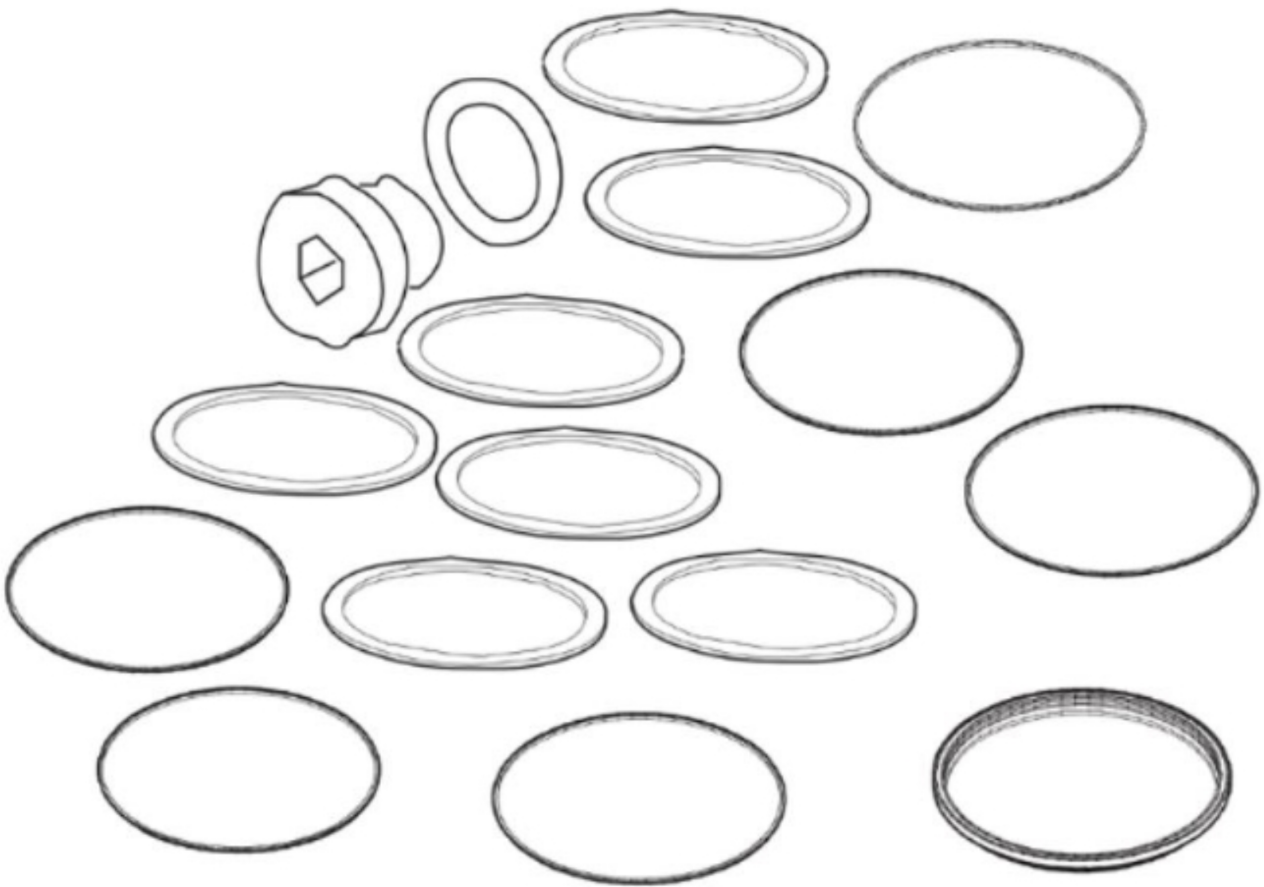
Item	Part No.	Name	Qty	L
1	3315333591	Label kit	1	
2	--	Product label	1	A
3	--	Safety label	1	
4	--	Product label	1	
5	--	Safety label	1	
6	--	Sound power label	1	
7	--	Product label	1	B
8	--	Product label	1	

Comments for Page: Label kit

(L)OCAL REMARKS

A | "SB 52"

B | "SB 52"

Kits Seal kit

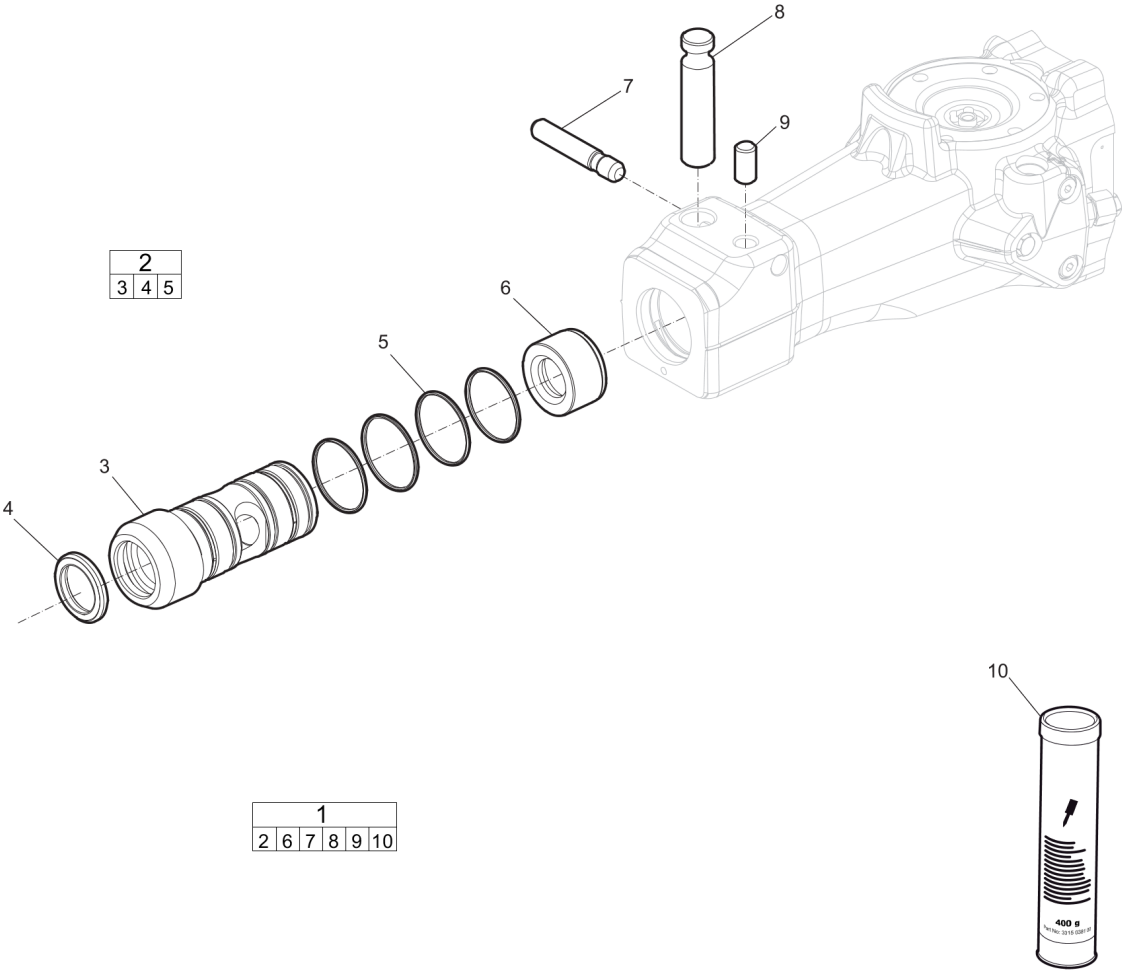
Item	Part No.	Name	Qty	L
1	3315333590	Seal kit	1	
4	3315334200	Scraper ring	1	
5	0663210800	O-ring, 54.5 x 3 mm, 2.15 x 0.12 in.	4	
22	0661100048	Seal washer	1	
23	0663212000	O-ring 13.3 x 2.4 mm (70 shore), 0.52 x 0.09 in.	1	
27	0663903201	O-ring, 15.6 x 1.78 , 0.62 x 0.07 in. (90 shore)	1	
28	0663905401	O-ring, 10.82 x 1.78 mm , 0.43 x 0.07 in. (90 shore)	1	
33	0663903201	O-ring, 15.6 x 1.78 , 0.62 x 0.07 in. (90 shore)	1	
34	0663905401	O-ring, 10.82 x 1.78 mm , 0.43 x 0.07 in. (90 shore)	1	
36	0663211489	O-ring, 28.24 x 2.62 mm, 1.11 x 0.10 in.	2	
38	0665909963	Wiper	1	
39	0665070142	Piston rod seal	1	
41	0663211364	O-ring 58 x 3 mm	8	
43	0665070141	Piston rod seal	1	
44	0663210653	O-ring, 76 x 2 mm, 2.99 x 0.08 in.	1	
48	3315280800	Valve rubber	1	

Kits Accumulator repair kit

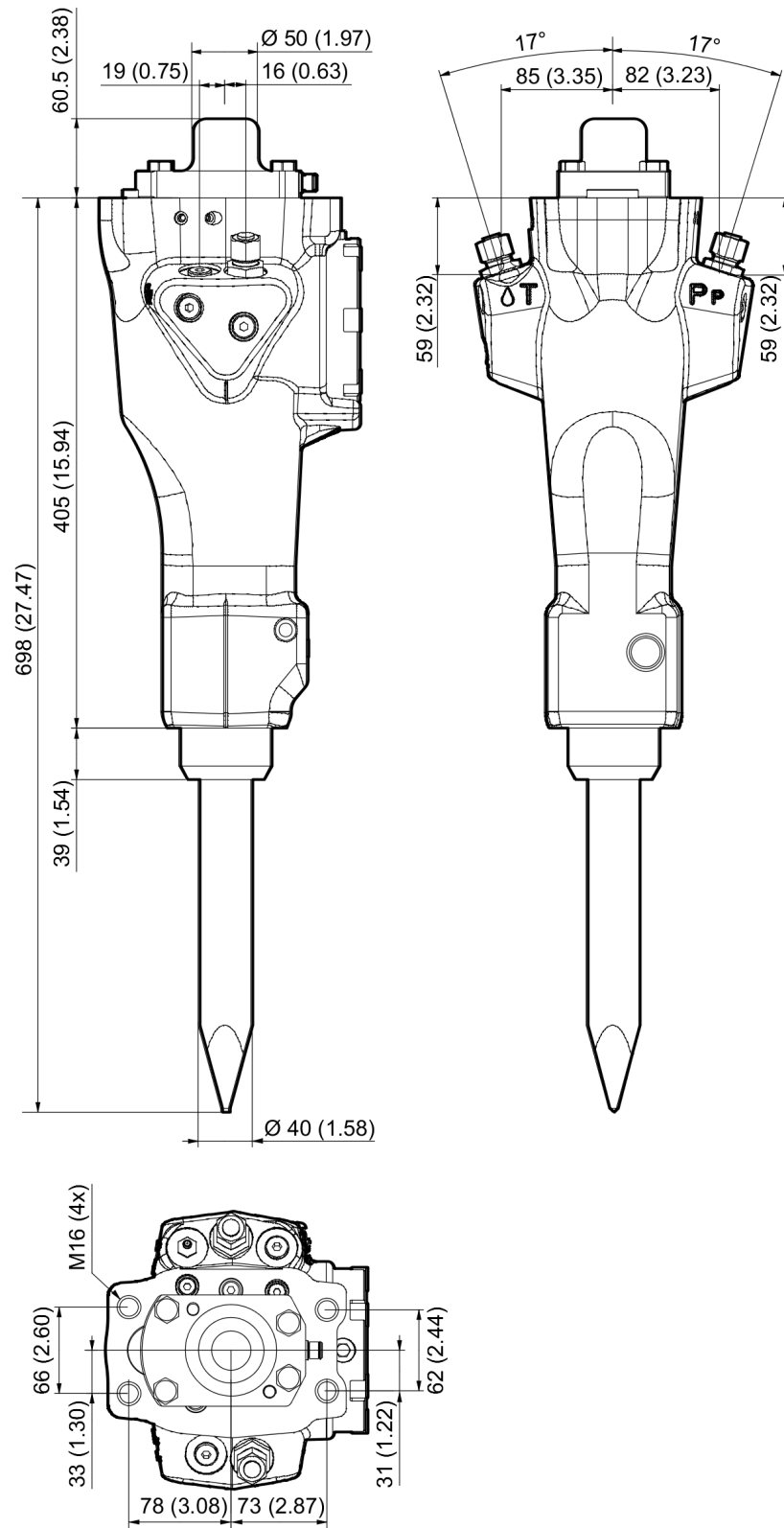
NO EXPLODED VIEW
AVAILABLE
FOR THIS BOM

Item	Part No.	Name	Qty	L
1	3315334690	Accumulator repair kit	1	
-	0686371805	Plug VSTI R 1/8-ED	1	A
-	3315346600	Coil spring	1	
-	3315339100	Diaphragm support	1	
-	3315346200	Diaphragm	1	
-	0211196548	Allen screw	6	
-	0661100048	Seal washer	1	
-	0663212000	O-ring 13.3 x 2.4 mm (70 shore), 0.52 x 0.09 in.	1	
-	3315346400	Charge valve	1	

Kits Lower hammer part kit - SB 52



Item	Part No.	Name	Qty	L
1	3315352105	Lower hammer part kit	1	
2	3315333780	Bushing, complete	1	
3	-	Bushing	1	
4	3315334200	Scraper ring	1	
5	0663613501	O-ring, 54.5x3 mm (90 shore)	4	
6	3315334500	Stop ring	1	
7	3315333900	Lock pin	1	
8	3315346500	Tool retainer	1	
9	3315304600	Lock buffer	1	
10	3315038100	Chisel paste cartridge, 400 g 0.88 lb	1	

Dimensions Dimensions SB 52

Refer to the Parts Online web page for most up-to-date information. The printed information might be outdated.

Any unauthorized use or copying of the contents or any part thereof is prohibited.
This applies in particular to trademarks, model denominations, part numbers, and drawings.