

TECHNICAL INFORMATION

DATE: 04/2023

ISSUE: 1

NUMBER: 2/853

SUBJECT: 2/853: Introduction of JCB OAT Coolant

PRODUCTS AFFECTED: Agricultural Tractors, Articulated Dump Trucks, Backhoe Loaders, Compaction Equipment, Dumpster, Engines (JCB), Engines (Non-JCB), Generators & Lighting Towers, Groundcare, Industrial Forklifts, Light Equipment, Mini Excavators, Mobile Elevating Work Platforms (MEWPs), Rough Terrain Forklifts, Site Dumpers, Skidsteer Loaders, Telescopic Handlers, Tracked/Wheeled Excavators, Wheeled Loaders

TO BE CARRIED OUT: Information Only

SAFETY NOTICE: Instructions in Service Bulletins assume that the engineer has a sound knowledge of safety procedures and has been trained in the maintenance and repair of JCB products. If you are unsure or do not understand information contained in this or other bulletins, ask your supervisor or contact JCB Service for advice. REMEMBER SAFETY MUST COME FIRST.

Copyright © 2004 JCB SERVICE. All rights reserved. No part of this publication may be reproduced, stored in a retrieval system, or transmitted in any form or by any other means, electronic, mechanical, photocopying or otherwise, without prior permission from JCB SERVICE.

This communication and the information within is intended for the recipient only, for information purposes, is confidential and may not be communicated to any third party. Whilst the information is believed to be correct, no guarantee is given by JCB as to its accuracy and its use may not be attributed to JCB. This bulletin is issued for information only and does not constitute an instruction to carry out warranty repairs on JCB products.

Introduction

JCB OAT coolant has been introduced as a replacement for the JCB High-Performance coolant for the following engines.

- JCB
- Perkins
- Kohler
- Kubota
- Sisu

Changing from the High-Performance coolant to OAT coolant provides quality advantages with a technology upgrade, ensuring optimal engine temperature, power, and longevity.

Note: SI-OAT coolant is already used in MTU and Cummins engines. The information in this bulletin does not affect these engines.

Figure 1. JCB OAT Coolant

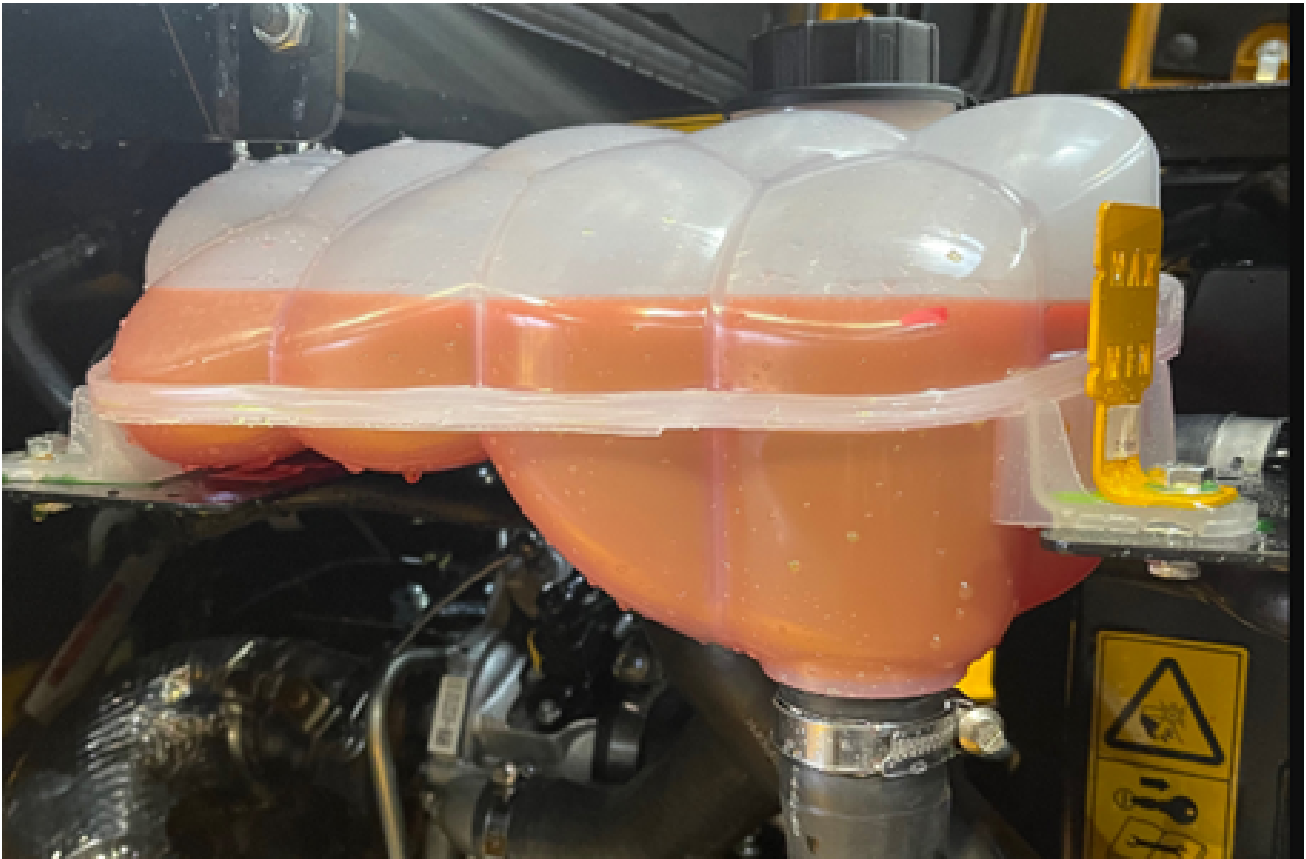


Figure 2. High-Performance Coolant



Note that the High-Performance coolant is green in colour. OAT coolant and Si-OAT coolant are red.

Manufacturing Cut-In Details

JCB OAT coolant was introduced on production machines from the build dates. [Refer to Table 1.](#)

Table 1.

Machines	Production Date
BHL, Site Dumper, Loadall	From mid December 2022
Compact Products (Mini Excavator, RTFL, TLT, Compact Loadall)	From mid January 2023
Heavy Products (Large wheeled/tracked Excavator, Hydradig)	From mid February 2023
Generators (G70 RS and G125 RS)	From mid March 2023

Note: The introduction of compact and medium loading shovels, TM, and Fastrac is planned for May 2023.

Service Instruction

Mixing of the High-Performance 'green' coolant and OAT 'red' coolant can result in a 'brown' colour of the coolant.

This has no impact on the performance or durability of the coolant but visually may cause customer dissatisfaction.

Figure 3.



Machines Filled with JCB OAT Coolant (Red):

These machines should be topped up/refilled with JCB OAT coolant (Red).

JCB High-Performance coolant (Green) as a top-up is permitted but may visually cause customer dissatisfaction.

Use JCB OAT coolant (Red) for warranty repair and routine service purposes.

Machines Filled with JCB High-Performance Coolant (Green)

These machines should be topped up/refilled with JCB High-Performance coolant (Green) whenever possible.

Use of JCB OAT coolant (Red) as a top-up is permitted but may visually cause customer dissatisfaction.

For the purposes of a warranty repair before the scheduled coolant change, where JCB High Performance coolant is not available, a complete flush and renew with JCB OAT coolant (Red) will be required.

For routine servicing, where JCB High Performance coolant is not available, a complete flush and renew with JCB OAT coolant (Red) will be required.

Flushing Procedure

In the event of the coolant system needing to be flushed, the system should be drained and then flushed twice with distilled water to ensure there are no traces of old coolant in the system. Refer to the relevant machine Service Manual.

Part Numbers

The coolant change was previously addressed in aftermarket bulletins API559CAE and API518CAE.

Figure 4.



Table 2.

JCB Part Number	Description	Pack Size
4006/1801	JCB OAT Coolant Concentrate	5L(x4)
4006/1805	JCB OAT Coolant Concentrate	20L
4006/1803	JCB OAT Coolant Concentrate	200L
4006/1811	JCB OAT Coolant Readymix	5L(x4)
4006/1815	JCB OAT Coolant Readymix	20L
4006/1813	JCB OAT Coolant Readymix	200L