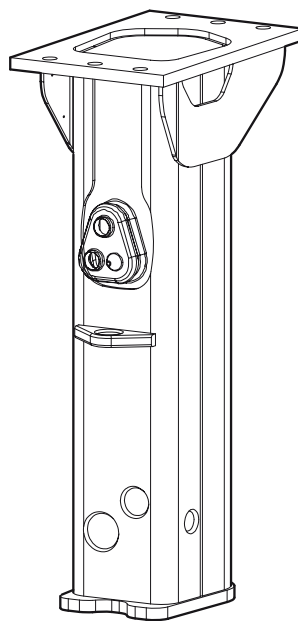


EC 40T

Spare parts list

Hydraulic breaker



General information

This spare parts list applies to the following:

Part number	Description
8460050050	EC 40T

Use only authorized parts. Any damage or malfunction caused by the use of unauthorized parts is not covered by Warranty or Product Liability. Any unauthorized use or copying of the contents or any part thereof is prohibited. This applies in particular to trademarks, model denominations, part numbers, and drawings.

Instructions for use

This spare parts list contains no safety regulations and is merely intended to assist in the ordering of spare parts.

For information about operating, servicing, or repairing, the relevant Safety and operating instructions must be consulted at all costs.

Please observe the safety instructions listed in the relevant Safety and operating instructions!

Contents

Service, repair and wear part kits

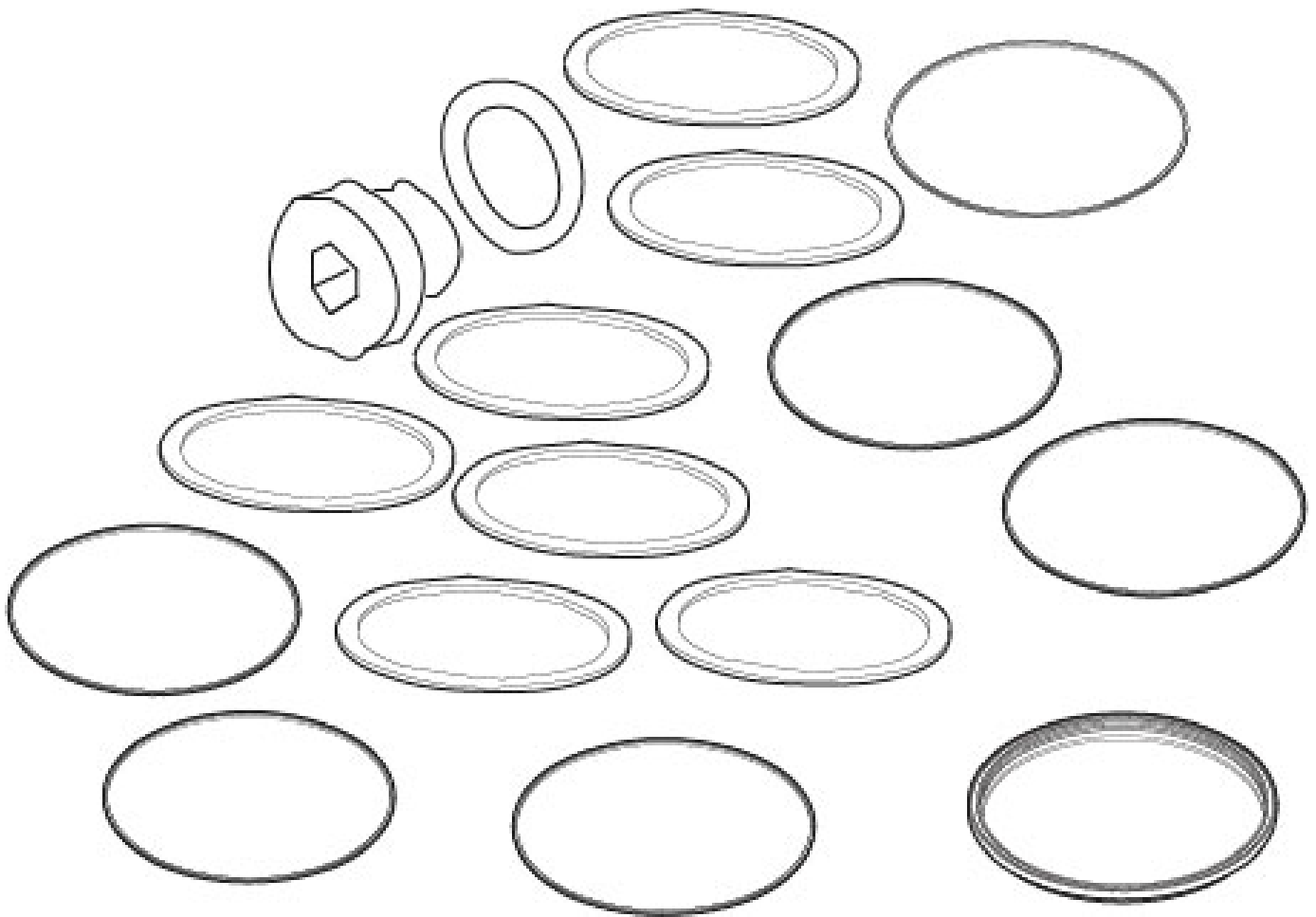
Seal kit	4
Label kit	6

Mechanical

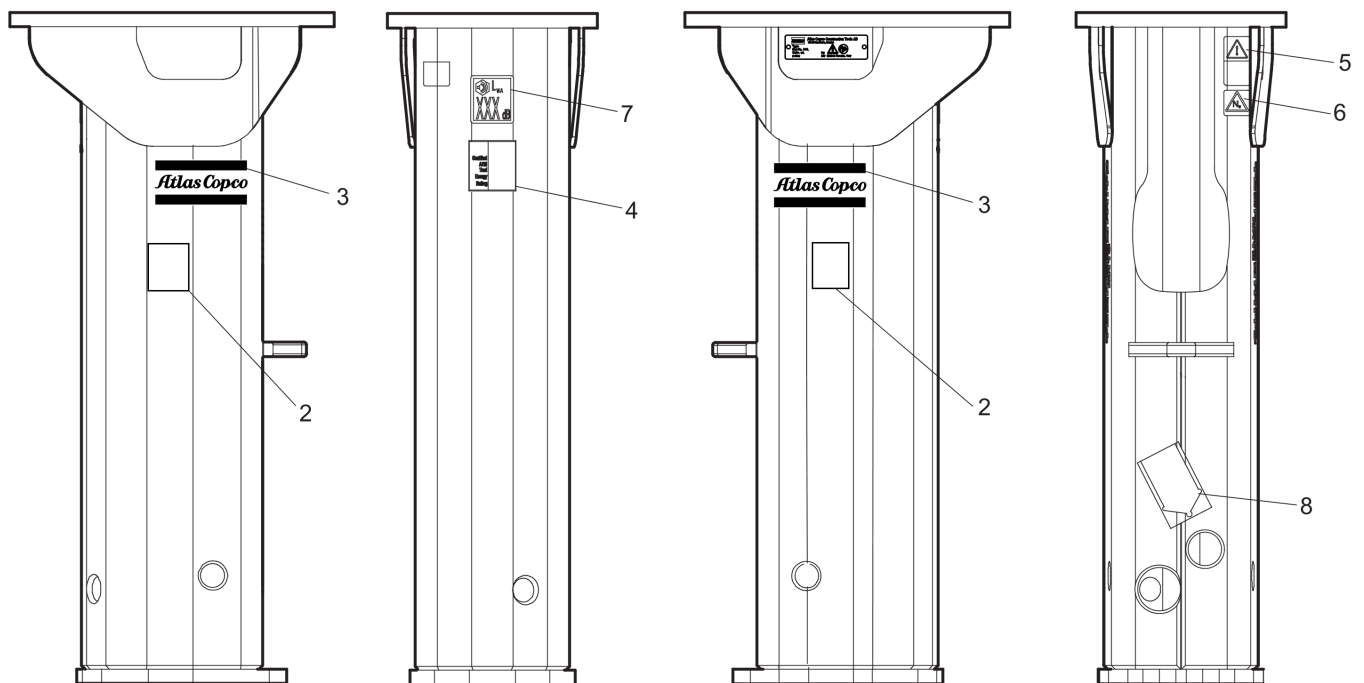
Hydraulic breaker	8
Impact mechanism	10
Main dimensions, mm (in.)	12
Tightening torques	13

Options/accessories

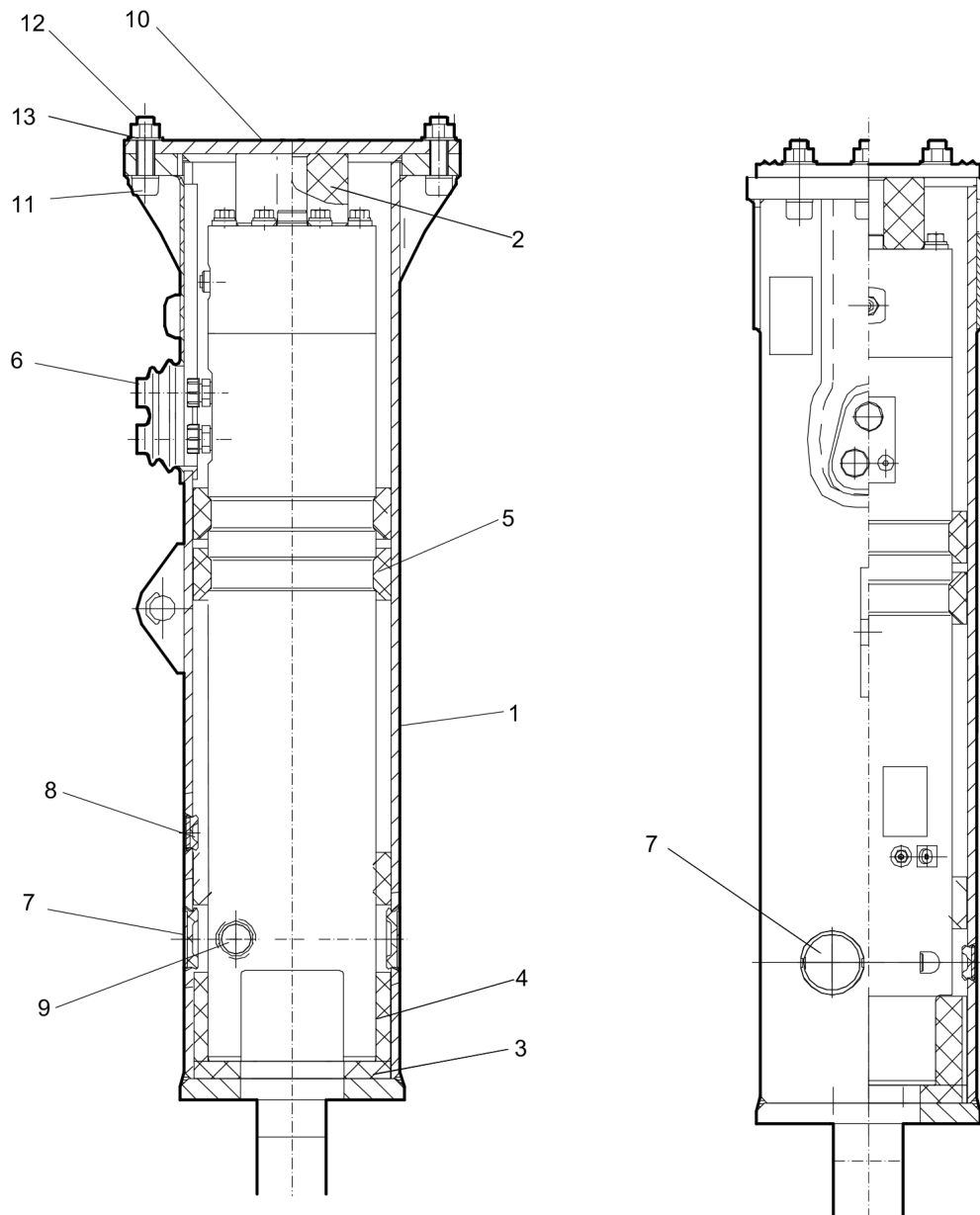
Optional equipment	16
Hydraulic hose	18
Working tools	20

Service, repair and wear part kits Seal kit

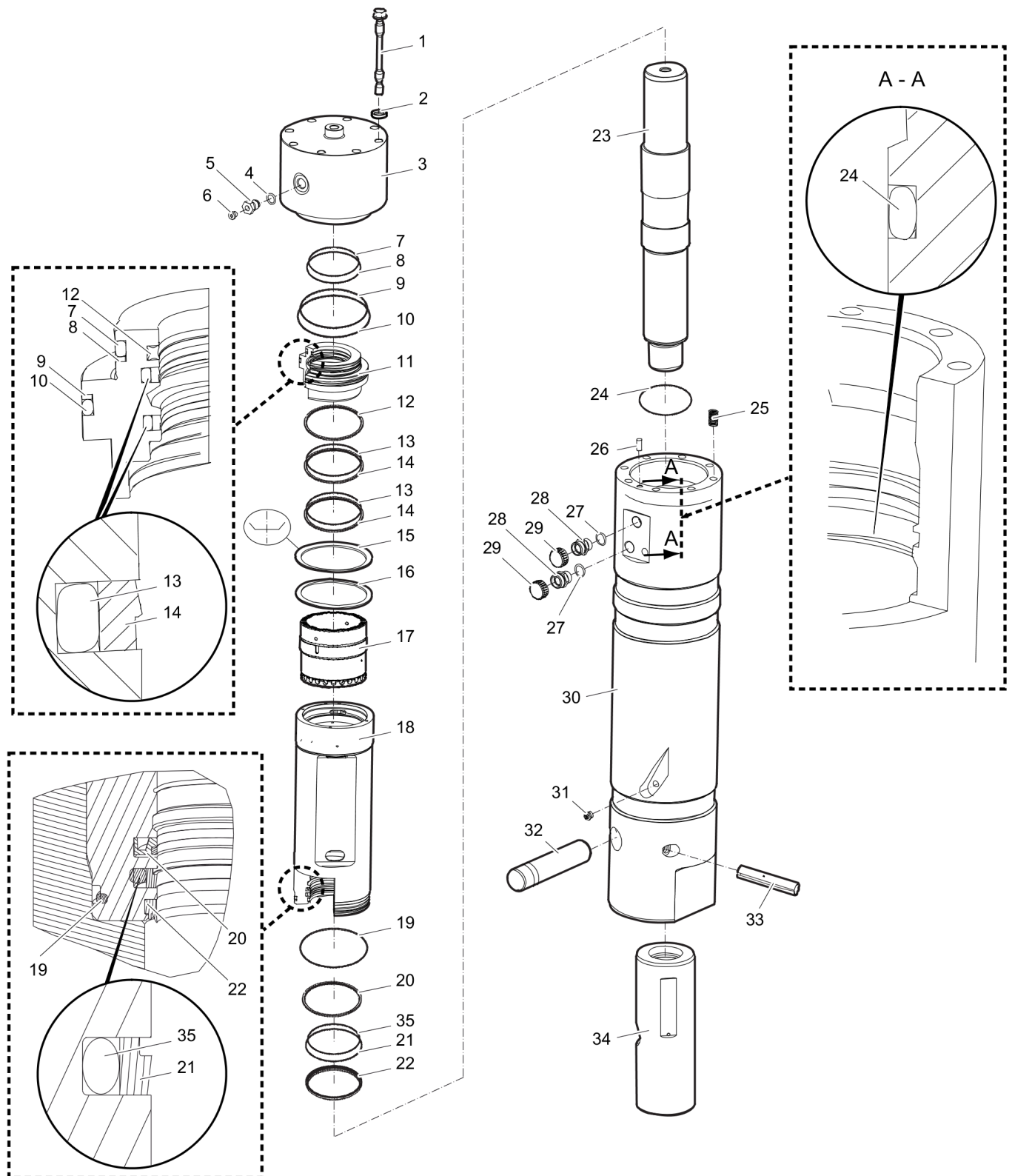
Item	Part No.	Name	Qty	L
1	3361110011	Seal kit	1	
.2	0663925100	O-ring, 15 x 3 mm (70 shore), 0.59 x 0.12 in. (70 shore)	1	
.3	3360478426	Threaded plug	1	
.4	3361192052	Seal, 37.46 x 5.33 mm, 1.48 x 0.21 in. (70 shore)	1	
.5	3361192053	Seal	2	
.6	3361192068	O-ring, 46.99 x 5.33 mm, 1.85 x 0.21 in. (70 shore)	1	
.7	3361192055	O-ring, 56.74 x 3.53 mm, 2.23 x 0.14 in. (90 shore)	1	
.8	3361192056	Back-up ring, 57.71 x 3 mm , 2.27 x 0.12 in. (90 shore)	1	
.9	3361192057	O-ring, 78.97 x 3.53 mm, 3.11 x 0.14 in. (90 shore)	1	
.10	3361192058	Back-up ring, 79.53 x 3 mm , 3.13 x 0.12 in. (90 shore)	1	
.11	3361192072	O-ring, 43.82 x 5.33 mm, 1.73 x 0.21 in.	1	
.12	3315296605	Seal	1	
.13	3361192061	O-ring, 72 x 3.53 mm, 2.84 x 0.14 in. (90 shore)	1	
.14	3361192063	Seal, 40 x 55.6 x 6 mm, 1.58 x 2.19 x 0.24 in.	1	
.15	3361192064	Seal	1	
.16	3361192065	Wiper, 40 x 48 x 5 mm, 1.58 x 1.89 x 0.20 in.	1	
.17	3361192066	O-ring, ø16.36 x 2.21 mm	1	

Service, repair and wear part kits Label kit

Item	Part No.	Name	Qty	L
1	3382070013	Label kit	1	
2	-	Product label	2	
3	-	Product label	2	
4	-	AEM sign	1	
5	3315262900	Safety label	1	
6	3315263000	Safety label	1	
7	-	Sound power label, 109 dB	1	
8	3360995411	Greasing Label	1	

Mechanical Hydraulic breaker

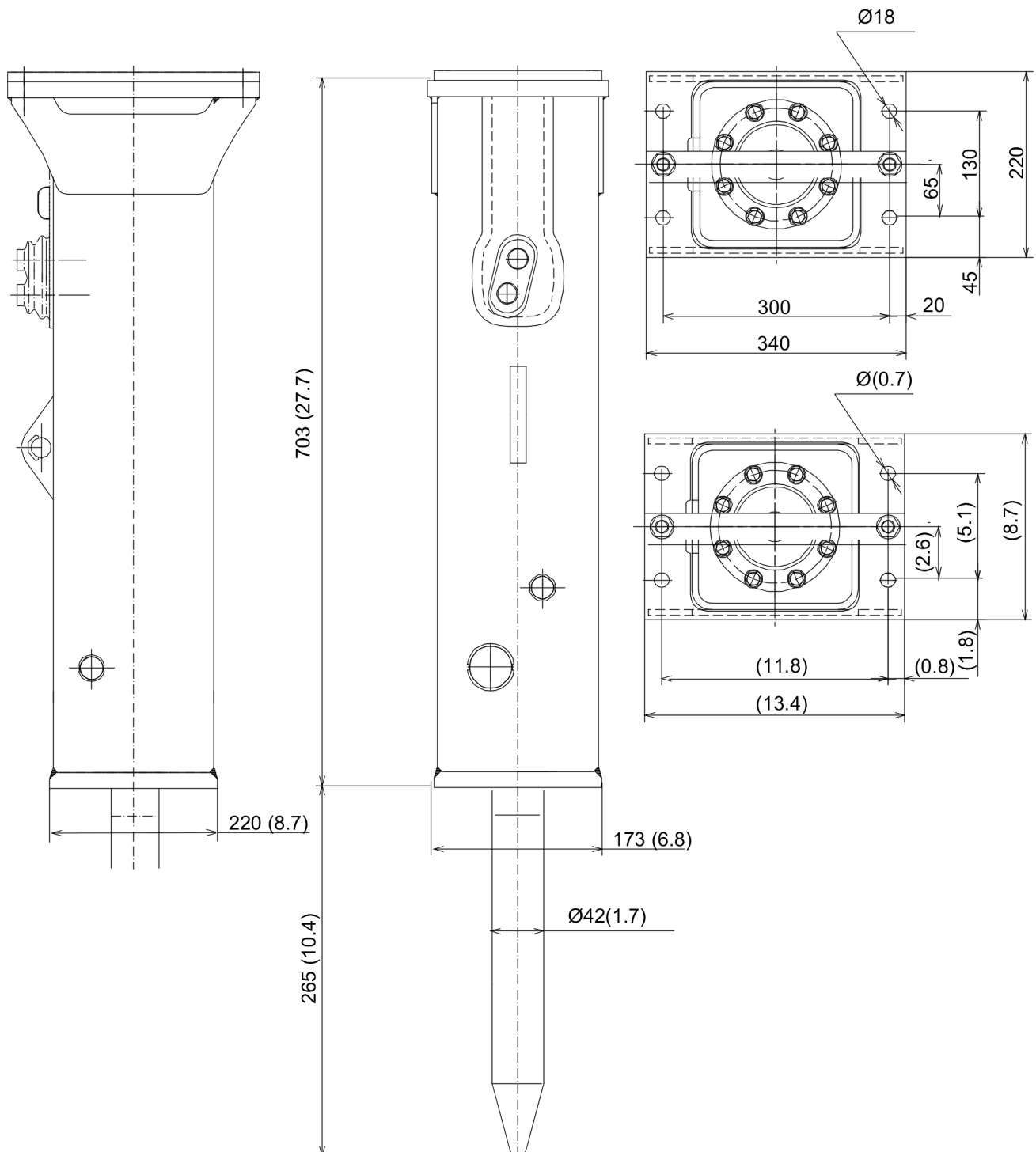
Item	Part No.	Name	Qty	L
1	3315286100	Hammer box	1	
2	3362491011	Elastic pad	1	
3	3315288200	Shock absorber	1	
4	3315288300	Guide plate	1	
5	3315288400	Guide plate	2	
6	3362491012	Cover	1	
7	3362491013	Plug	1	
8	3362491014	Plug	1	
9	3362491015	Plug	3	
10	3362267852	Base plate, optional	1	
11	3360026644	Allen screw	6	
12	3360103270	Nut, optional	6	
13	3361333703	Pair of lock washers	12	

Mechanical Impact mechanism

Refer to Parts Online for the most up to date information. The printed information might be outdated.

Tue Oct 07 00:14:48 MDT 2014

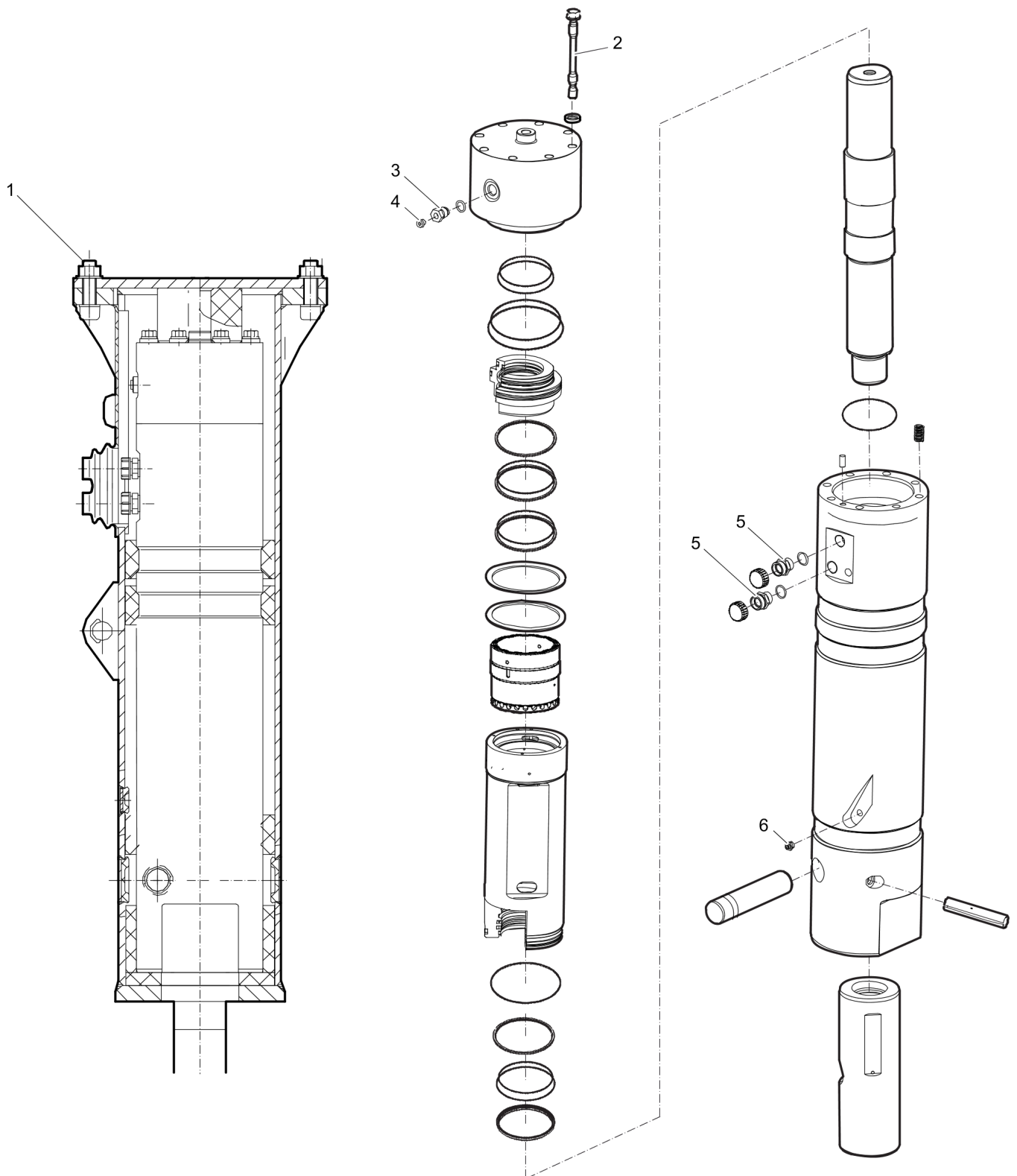
Item	Part No.	Name	Qty	L
1	3361191008	Bolt	8	
2	3361191009	Washer	8	
3	3361110007	Cover	1	
4	0663925100	O-ring, 15 x 3 mm (70 shore), 0.59 x 0.12 in. (70 shore)	1	
5	3362264253	Filling valve	1	
6	3360478426	Threaded plug	1	
7	3361192055	O-ring, 56.74 x 3.53 mm, 2.23 x 0.14 in. (90 shore)	1	
8	3361192056	Back-up ring, 57.71 x 3 mm , 2.27 x 0.12 in. (90 shore)	1	
9	3361192058	Back-up ring, 79.53 x 3 mm , 3.13 x 0.12 in. (90 shore)	1	
10	3361192057	O-ring, 78.97 x 3.53 mm, 3.11 x 0.14 in. (90 shore)	1	
11	3361110003	Seal bush	1	
12	3361192052	Seal, 37.46 x 5.33 mm, 1.48 x 0.21 in. (70 shore)	1	
13	3361192072	O-ring, 43.82 x 5.33 mm, 1.73 x 0.21 in.	2	
14	3361192053	Seal	2	
15	3361110004	Plate spring	1	
16	3361110005	Spacer	1	
17	3361110106	Control valve	1	
18	3361110002	Cylinder body	1	
19	3361192061	O-ring, 72 x 3.53 mm, 2.84 x 0.14 in. (90 shore)	1	
20	3361192063	Seal, 40 x 55.6 x 6 mm, 1.58 x 2.19 x 0.24 in.	1	
21	3361192064	Seal	1	
22	3361192065	Wiper, 40 x 48 x 5 mm, 1.58 x 1.89 x 0.20 in.	1	
23	3315332500	Piston	1	
24	3315296605	Seal	1	
25	3360185031	Threaded insert	8	
26	3363070232	Dowel pin	1	
27	3361192066	O-ring, \varnothing 16.36 x 2.21 mm	2	
28	3361031612	Fitting	2	
29	3361353485	Cap	2	
30	3361110018	Housing	1	
31	0544215300	Grease nipple	1	
32	3361110010	Retainer pin	1	
33	3363083854	Split pin	1	
34	3361110019	Wear bush	1	
35	3361192068	O-ring, 46.99 x 5.33 mm, 1.85 x 0.21 in. (70 shore)	1	

Mechanical Main dimensions, mm (in.)

Refer to Parts Online for the most up to date information. The printed information might be outdated.

Tue Oct 07 00:14:49 MDT 2014

This page intentionally left blank

Mechanical Tightening torques

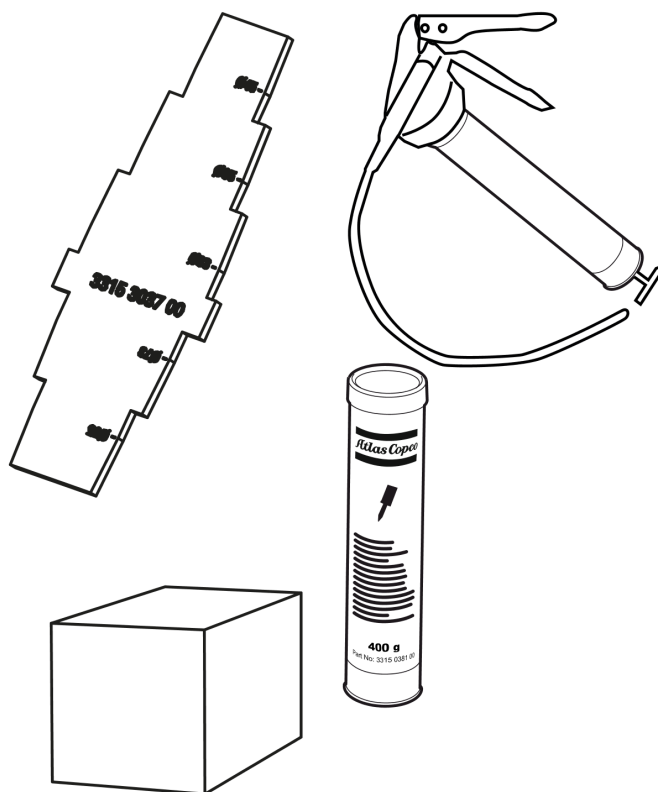
Refer to Parts Online for the most up to date information. The printed information might be outdated.

Tue Oct 07 00:14:50 MDT 2014

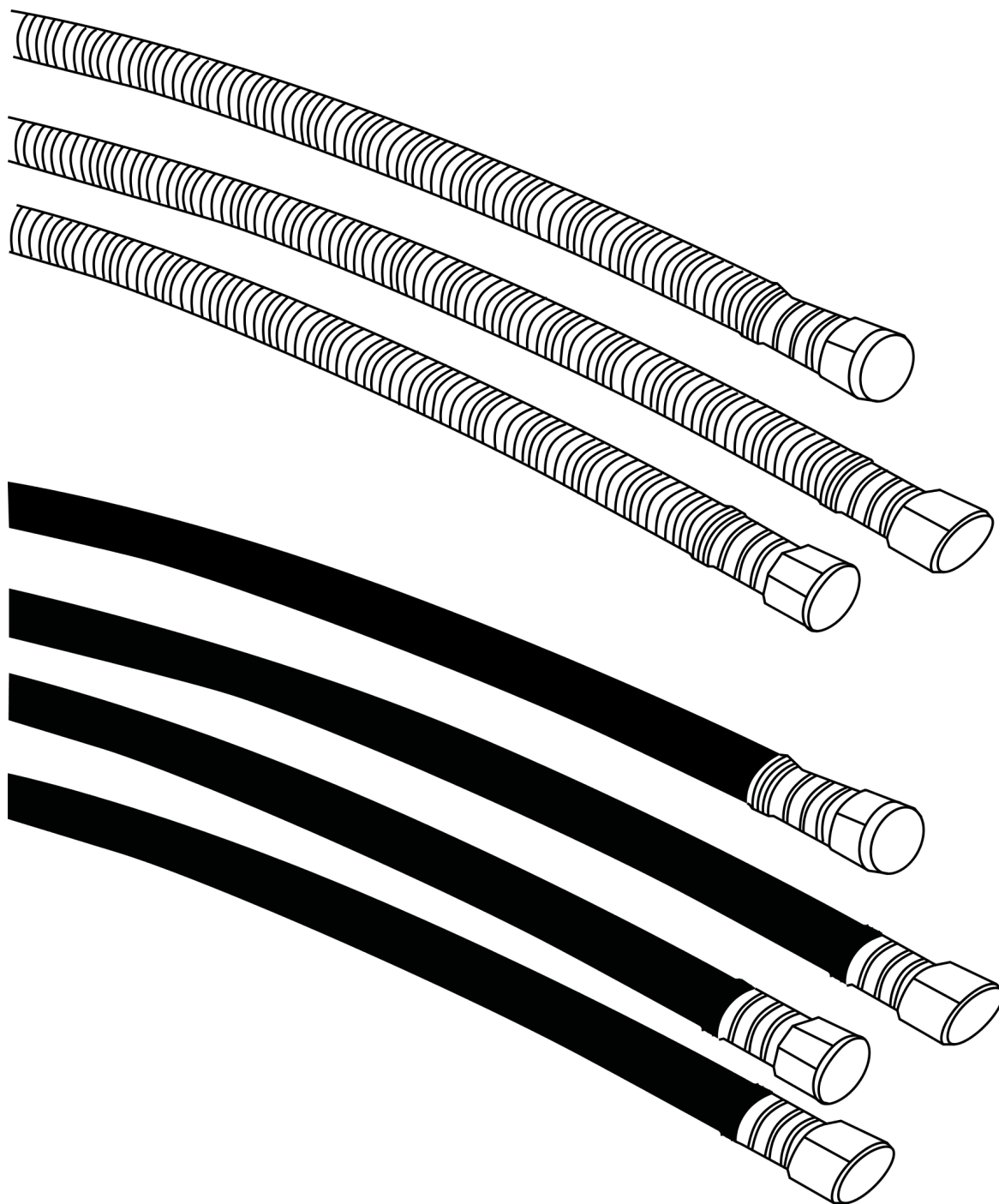
Item	Part No.	Name	Qty	L
1	-	Screw, 200 Nm	-	
2	-	Bolt	-	A
3	-	Filling valve, 130 Nm	-	
4	-	Plug, 20 Nm	-	
5	-	Fitting, 60 Nm	-	
6	-	Grease nipple, 20 Nm	-	

Comments for Page: Tightening torques

- A | 1. Pretighten the bolts to 15 Nm, proceeding in a crosswise fashion,
2. then tighten each bolt through 60°,
3. finally tighten each bolt again through 30° in a crosswise fashion.

Options/accessories Optional equipment

Item	Part No.	Name	Qty	L
1	3363094913	Chisel paste cartridge, 400 g x 12, 0.88 lb x 12	1	
2	0909107100	Grease gun	1	
3	3315303700	Test gauge wear bush	1	
4	3363089844	Service box with nitrogen cylinder, 2 l, 0.43 gal (0.53 US gal)	1	
5	3363094940	Servie box without nitrogen cylinder	1	
6	3362269303	Base plate	1	
7	3363106507	Bolt kit	1	

Options/accessories Hydraulic hose

Item	Part No.	Name	Qty	L
1	-	Standard connection hoses	1	
2	3363115420	Hose	2	A
3	3363491001	Hose	2	B
4	3363101421	Hose	2	C
5	-	Heavy duty connction hoses with spring protection	1	
6	3363115422	Hose	2	D
7	3363353551	Hose	2	E
8	3363085946	Hose	2	F

Comments for Page: Hydraulic hose

A | 15 L, (M 22 x 1.5), length 1500 mm (59 in.)

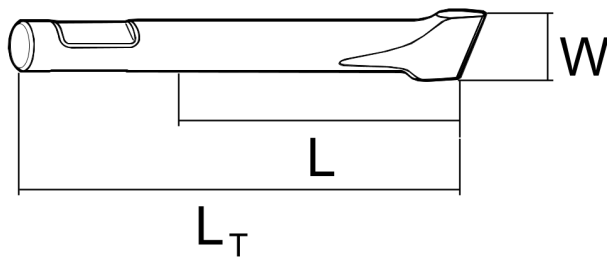
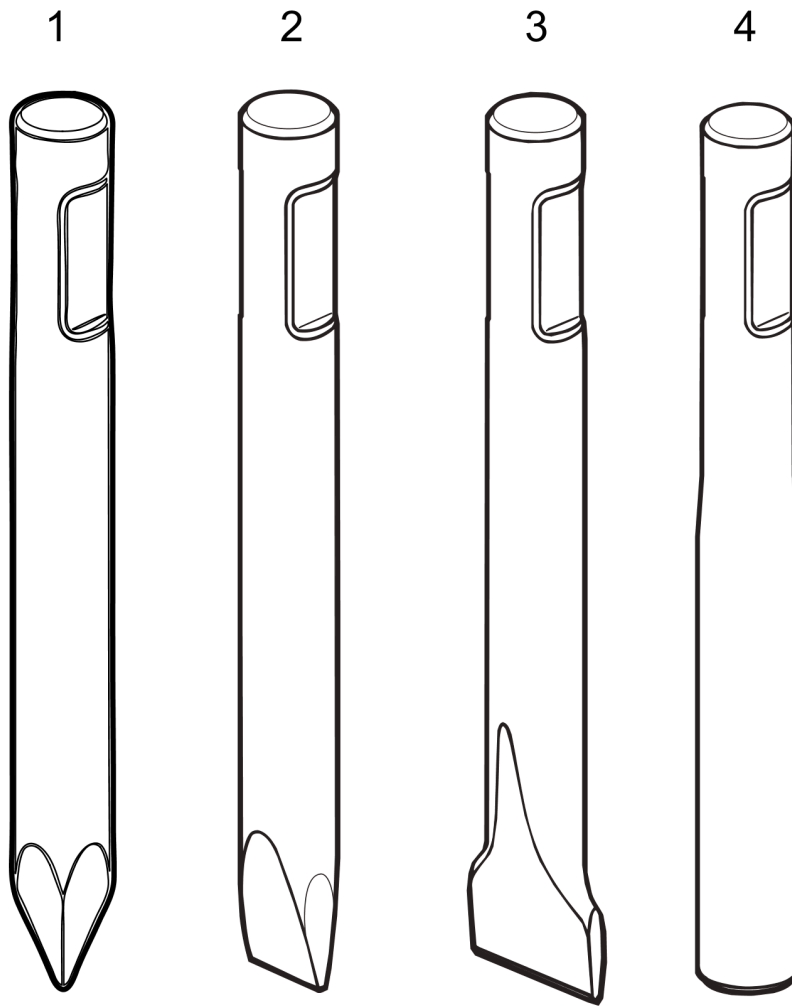
B | 15 L, (M 22 x 1.5), length 1750 mm (69 in.)

C | 15 L, (M 22 x 1.5), length 2100 mm (83 in.)

D | 15 L, (M 22 x 1.5), length 1500 mm (59 in.)

E | 15 L, (M 22 x 1.5), length 1750 mm (69 in.)

F | 15 L, (M 22 x 1.5), length 2100 mm (83 in.)

Options/accessories Working tools

Item	Part No.	Name	Qty	L
1	3363110001	Moil point		A
2	3363110002	Chisel (cross)		B
3	3363110005	Asphalt cutter (cross)		C
4	3363110003	Blunt tool		D

Comments for Page: Working tools

A | L=265 mm, Lt=425 mm, Wt=4.0 kg

L=10.43 inch, Lt=16.73 inch, Wt=8.8 lb

B | W=42 mm, L=265 mm, Lt=425 mm, Wt=4.2 kg

W=1.65 inch, L=10.43 inch, Lt=16.73 inch, Wt=9.3 lb

C | W=120 mm, L=290 mm, Lt=450 mm, Wt=4.7 kg

W=4.72 inch, L=11.42 inch, Lt=11.72 inch, Wt=10.4 lb

D | L=265 mm, Lt=425 mm, Wt=4.4 kg

L=10.43 inch, Lt=16.73 inch, Wt=9.7 lb

Any unauthorized use or copying of the contents or any part thereof is prohibited.
This applies in particular to trademarks, model denominations, part numbers, and
drawings.

